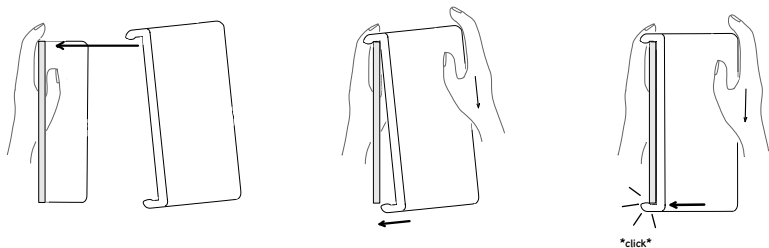


# tray studio display (tilt)

## what about the technical data of my tray?

your tray is made from pla and was manufactured using fdm 3d printing. it's size is about 16.5 x 9 x 1.5 cm, at an usable area of 16.4 x 6.9 cm and it weights approx. 40 grams.

## how do i attach my tray?

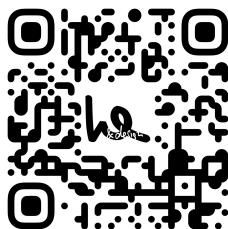


hold the stand of studio display with one hand so that it cannot tip over. using the other hand, first hook in the upper tab, then clip in the lower tab with some force.

the installation process is exactly like for the imac tray, it just takes some more force when clipping in the tab.

installation video: scan the qr code or enter the following address into your browser:

<https://weundd.de/imac-tray-help/>



## how to use my tray ?

after you clip the tray onto the stand you can move it up and down to your desired height and place objects on top, like hard-disks. **risk of injury from broken tray!**

## how to clean my tray?

use a soft lint-free cloth to wipe any dirt off. if necessary you can use water and some mild detergent.

***careful with higher temperatures: pla starts to soften at temperatures as low as 50°C and which can cause unwanted deformation.***

## how to remove my tray?

go through the installation process in reversed order and use your finger to unclip the hook on one side.

## how to dispose of my tray?

your tray can be disposed of as residual waste.

if recycling is possible: pla's recycling code is ♻️-o

pla is generally considered biodegradable. however, it should never be disposed of as organic waste or even into nature.

## what if i'm unhappy with my tray?

legal regulations and requirements apply. however, we're keen on you being satisfied with the product. if this isn't the case we'll find a mutual solution, please contact us: david@weundd.de

## who's manufacturing and selling the tray?

weber engineering & design UG (haftungsbeschränkt) | Schlierseer Str. 7 | 83734 Hausham | Sitz Hausham | Amtsgericht München HRB 258393